

State of Wyoming Corner Record

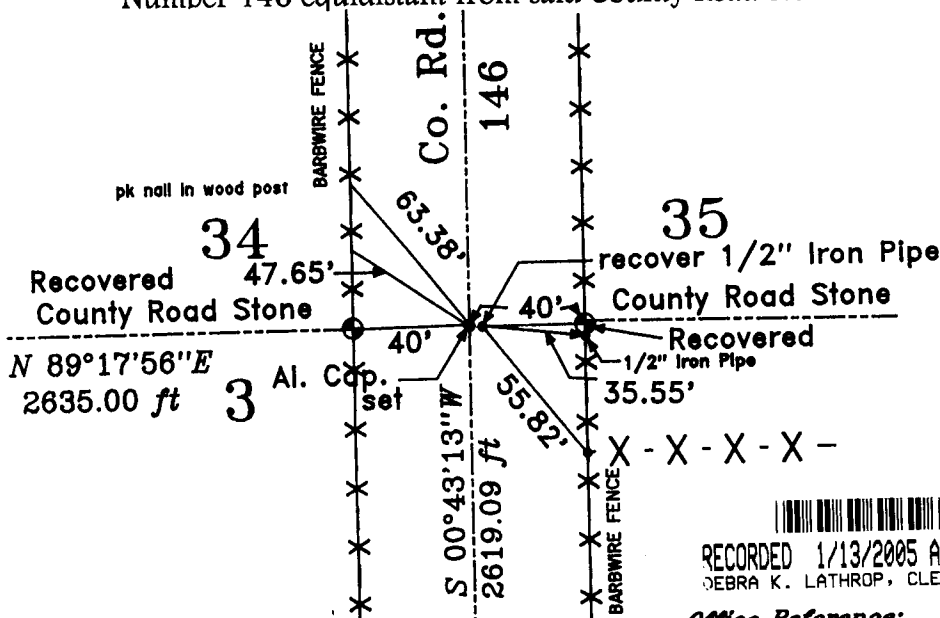
(In compliance with the CORNER PERPETUATION and FILING ACT, Wyoming Statutes, 1997,
Section 33-29-140, et seq., and the rules and regulations of the Board of Reigstration
for Engineers and Professional Land Surveyors)

The reverse side of this form may be used if more space is needed.

The Record of the original survey and the citation of the source of the historical information (if the corner is lost or obliterated). The description of the corner monumentation evidence as found and/or the monument and it's accessories as established to perpetuate the location of this corner. A sketch of the relative location of this Monument, accessories, and reference points with the course and distance to adjacent corner (s) (if determined during this Survey). The Method and Rationale used for the reestablishment of lost and obliterated corner.

Township boundaries were Surveyed by John B. Thomas on c contract dated 14 Oct. 1870, a Stone was set for the Section corner common to Sections 2 and 3 of T,13N. R.63 W, and Sections 34 and 35 of T.14N. R.63 W., said stone was searched for but not found. A 1/2" Iron Pipe was recovered as recorded by Robert C. Corbet LS 495. This pipe did NOT fit the two County Road Stones as recovered. The other reference markers for this corner as established by Robert C. Corbet were recovered and verified. The County road Stones were recovered being well marked and well set in the East and West fence lines along County Road Number 146.

Set a 5/8"X 28" rebar with a 3-1/4" Aluminum Cap in the center of County Road Number 146 equidistant from said County Road Stones as shown hereon.



RECORDED 1/13/2005 AT 2:41 PM REC# 407228 JK# 1859 PG# 896
DEBRA K. LATHROP, CLERK OF LARAMIE COUNTY, WY PAGE 1 OF 1

Date of Field Work: _____

Office Reference: _____

Cross Index Diagram

	1	2	3	4	5	6	7	8	9	10	11	12	13	14	15	16	17	18	19	20	21	22	23	24	25
A																									
B																									
C																									
D																									
E																									
F																									
G																									
H																									
I																									
J																									
K																									
L																									
M																									
N																									
O																									
P																									
Q																									
R																									
S																									
T																									
U																									
V																									
W																									
X																									
Y																									
Z																									

Firm/Agency, Address
Terrestrial Surveying & Mapping Co.
"Your Friendly Neighborhood Surveyor"
 1127 Terry Ranch Road
 Cheyenne, Wyoming 82007
 Telephone Number: (307) 634-9360

This Corner Record was prepared by me or under my direction and supervision.

SEAL & SIGNATURE

